

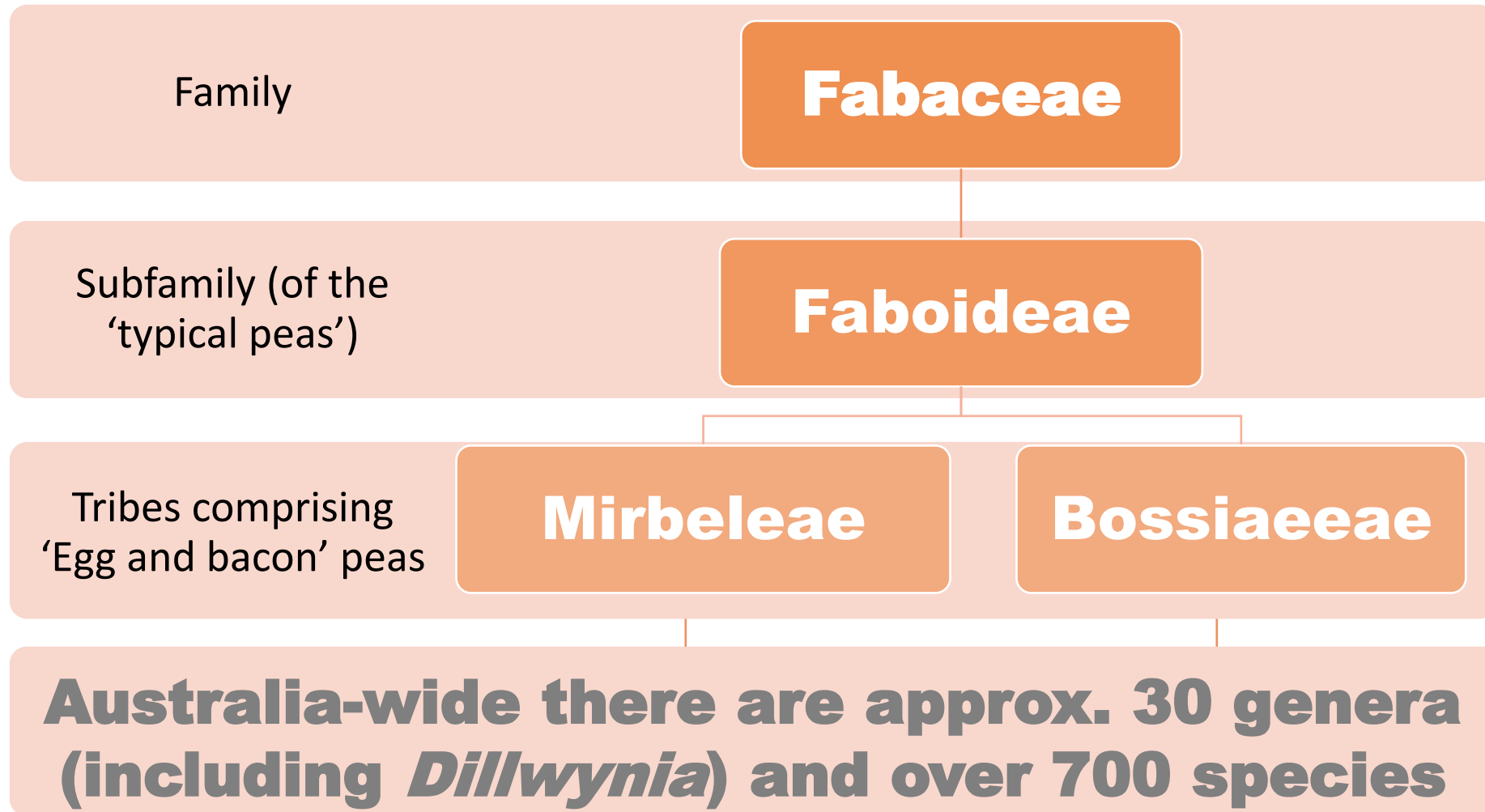
Differentiating between

Dillwynia hispida Red Parrot-pea and *Dillwynia sericea* Showy Parrot-pea



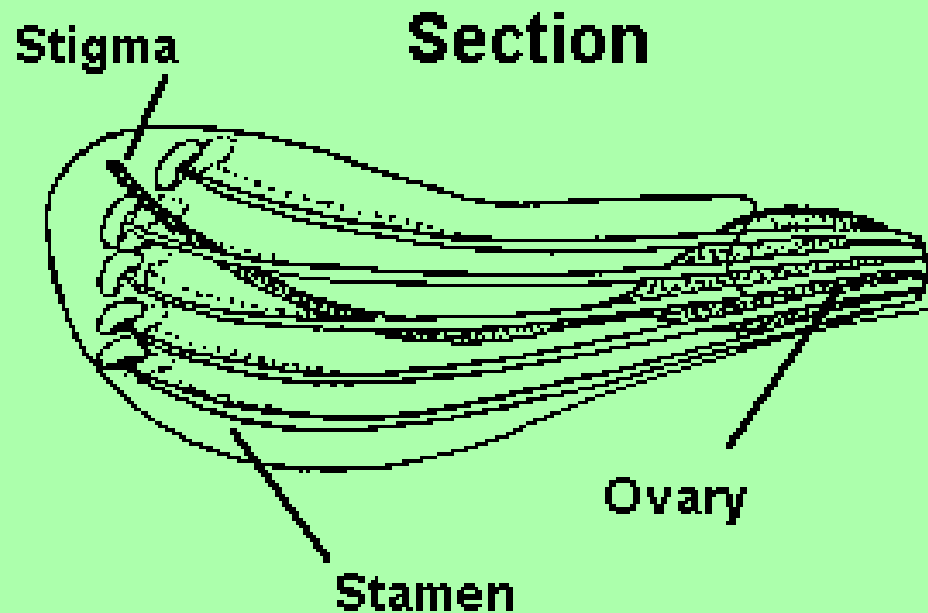
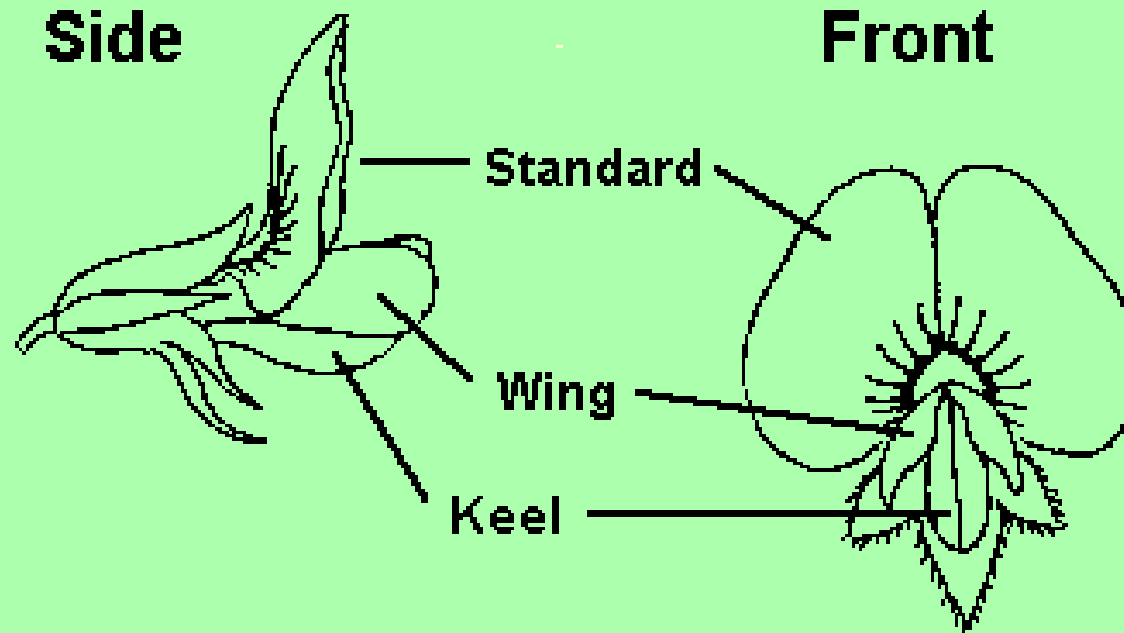
Bernie Lingham, GFNC Plant Group, 8 February 2022

‘Pea-flowered’ plants can be hard to ID;
they look alike and there are so many different species!



Typical 'pea' flower

**Main
identifying
feature of the
Subfamily
Faboideae is
flower
structure**

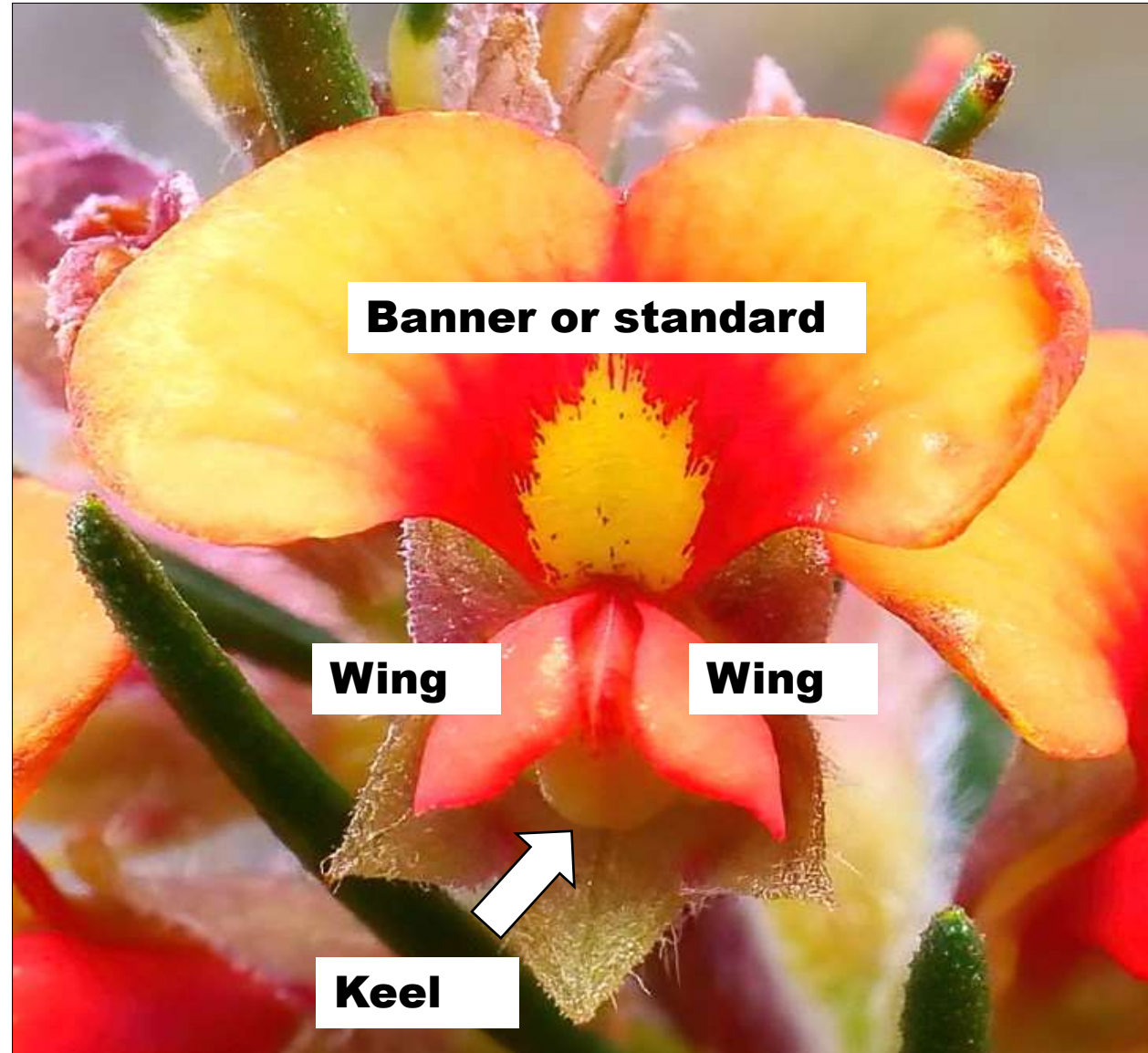


Typical 'pea' flower (cont.)

Faboideae flower structure:

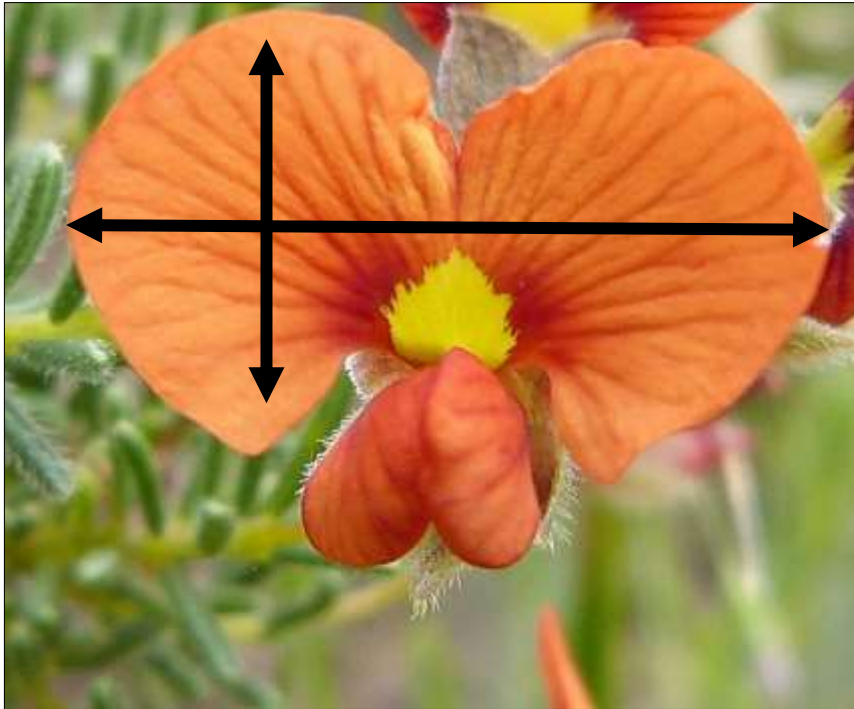
5 petals

- **1 forms the standard**
- **2 are wings**
- **2 join together to form the keel**



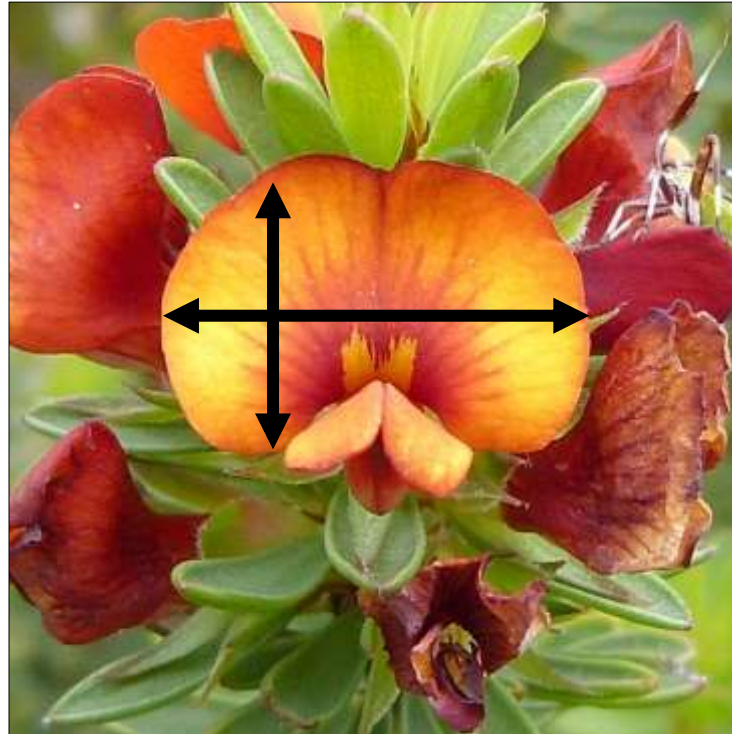
A visual clue to *Dillwynia*—the shape of the standard

Standard is much wider than high and dips in the centre



Dillwynia
Parrot-peas

Pultenaea
Bush-peas



Gompholobium
Wedge-peas

Dillwynia Parrot-peas

An endemic genus of 20 or more species which are found in all Australian states

Four common *Dillwynia* species in our region, including:

- ***D. hispida* Red Parrot-pea**
- ***D. sericea* Showy Parrot-pea**
- ***D. glaberrima* Smooth Parrot-pea**
- ***D. cinerascens* Grey Parrot-pea**

***D. hispida* Red Parrot-pea**
***D. sericea* Showy Parrot-pea**

Similarities

- **Shrubs, growing upto 1m**
- **Common plants of heathy woodland, woodland and open forest**
- **Flower in spring**
- **Flowers are mainly orange-red or apricot-red**
- **Leaves have a central groove on the upper surface**

D. hispida Red Parrot-pea
D. sericea Showy Parrot-pea (cont.)

Key differences between the 2 species

- 1. How the flowers are arranged on stems**
- 2. Shape and texture of the leaves**
- 3. Number of seeds per pod**

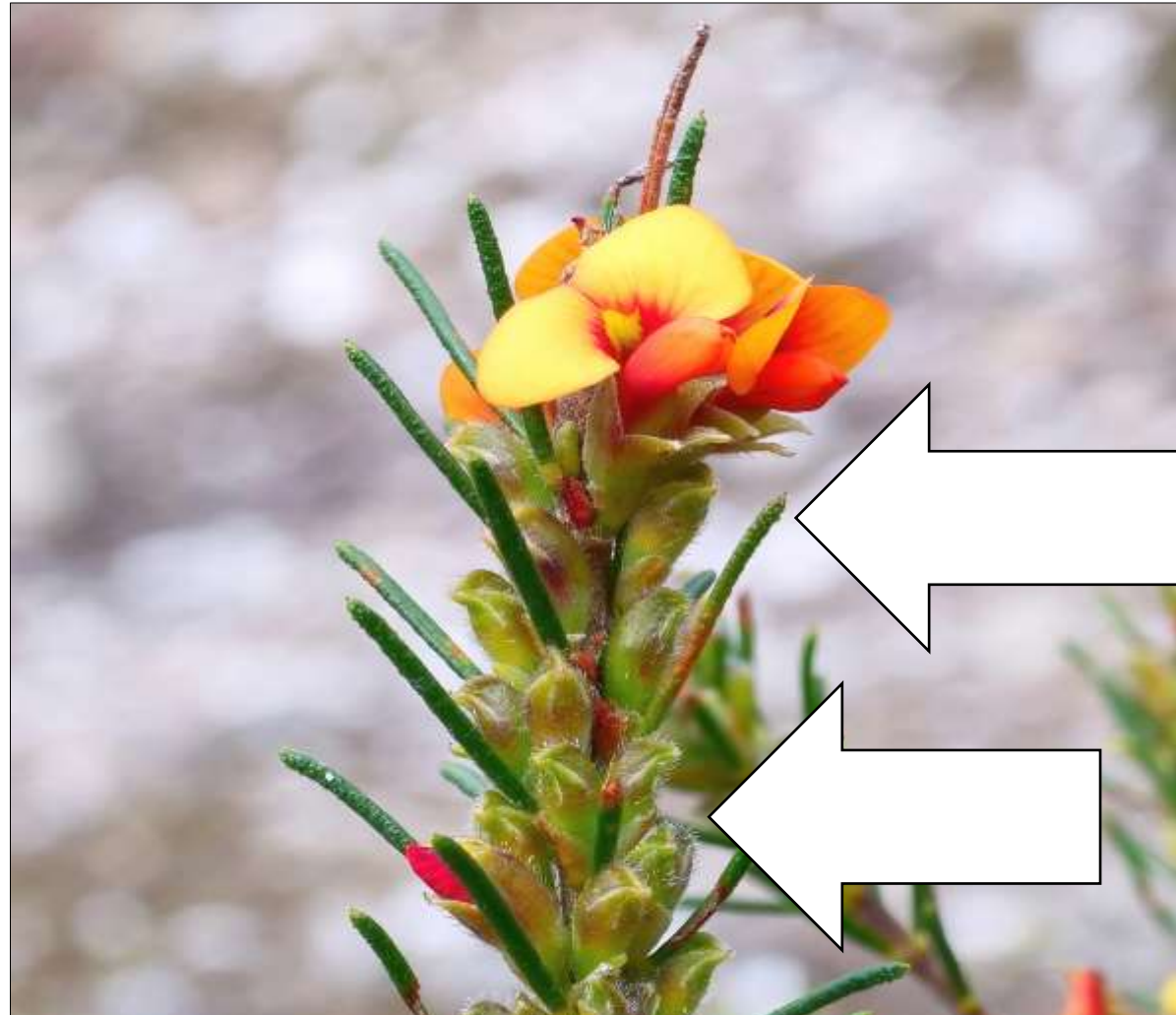
1. Arrangement of flowers on stem

Dillwynia hispida Red parrot-pea



**Flowers in
terminal
clusters on
long stems
(peduncles)**

Arrangement of flowers on stem (cont.)



**Flowers
mostly paired
(but can be
singles) in
leaf-axils**

***Dillwynia sericea* Showy Parrot-pea**

Arrangement of flowers on stem (cont.)



***Dillwynia hispida* Red parrot-pea**



***Dillwynia sericea* Showy Parrot-pea**

2. Shape and texture of leaves

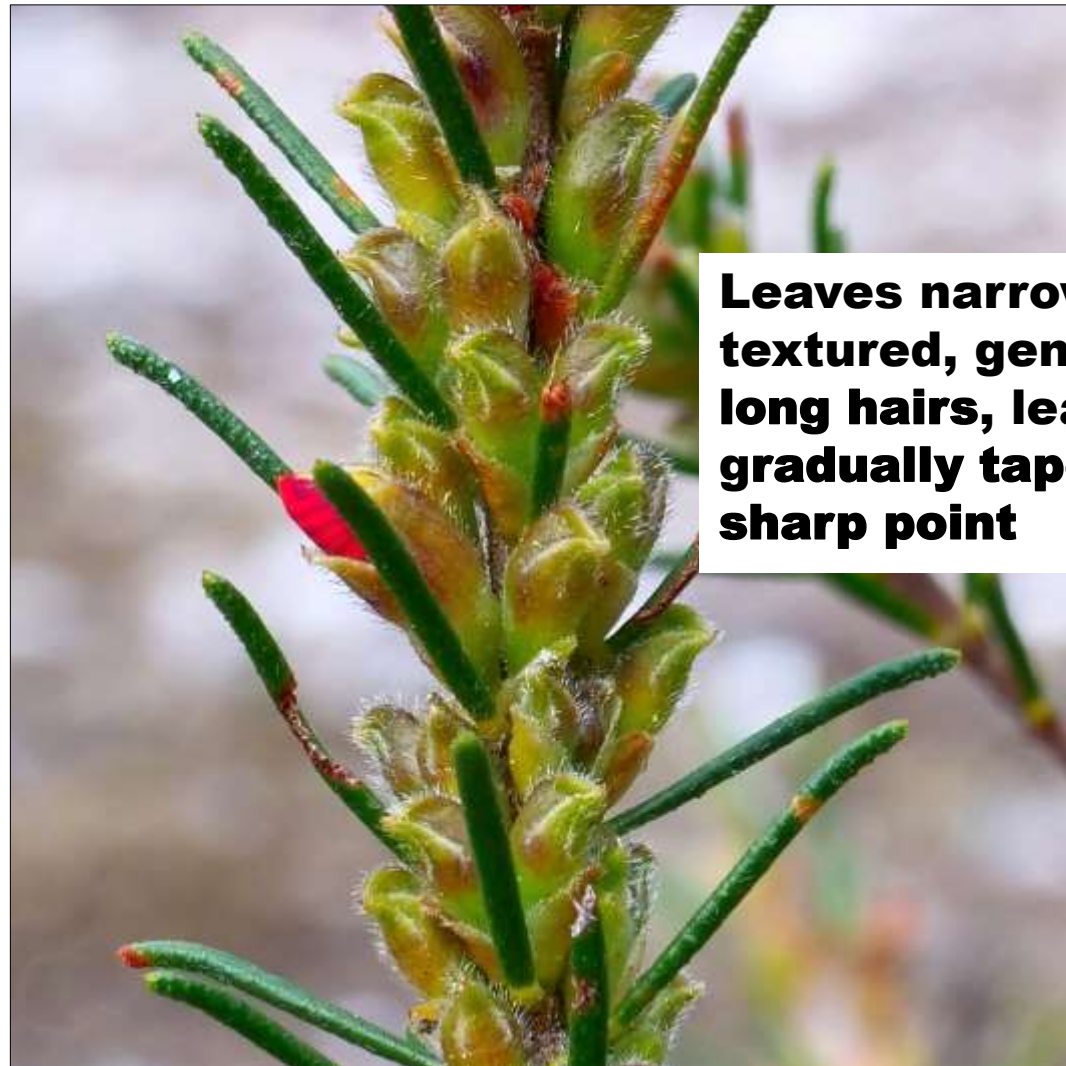


Leaves rough textured and hairy, leaf edges and tip incurved or curved inwards



***Dillwynia hispida* Red parrot-pea**

Shape and texture of leaves (cont.)



Leaves narrow, rough textured, generally with long hairs, leaf tip gradually tapers to a sharp point



***Dillwynia sericea* Showy Parrot-pea**

Shape and texture of leaves (cont.)



***Dillwynia hispida* Red parrot-pea**



***Dillwynia sericea* Showy Parrot-pea**

3. Pods (follow after flowering)



***Dillwynia hispida* Red parrot-pea**



***Dillwynia sericea* Showy Parrot-pea**

Key differences between 2 species

***D. hispida* Red Parrot-pea**



Flowers in terminal clusters on long stems (peduncles)



Leaves rough textured and hairy; leaf edges and tip curved inwards



1 seed per pod

***D. sericea* Showy Parrot-pea**

Flowers mostly paired (but can be singles) in leaf-axils



Leaves narrow, rough with long hairs; leaf tip gradually tapering to a sharp point



2 seeds per pod



Acknowledgements

Thanks to Lorraine Phelan and Chris Lindorff for photos they shared on iNaturalist.

References

Clark, I. and Lee, H. (1987) *Name that Flower*. Melbourne, Melbourne University Press.

Mayfield, E. (2013) *Flora of Otway Plain and Ranges, 2*. Collingwood, CSIRO.

**VICFLORA: Flora of Victoria, accessed February 2022
<https://vicflora.rbg.vic.gov.au/>**